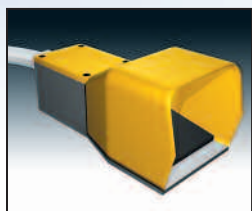


ACCESSORIES:

Calibrated Work Stop
An easy to use adjustable cut-to-length measure stop allowing multiple same length cuts. Available in inches or metric scale.



Pneumatic Vise with Foot Pedal
Allows operator to open and close the optional pneumatic vise from an independent foot pedal. Foot pedal comes complete with 5' cord.



Conveyors
A complete range of infeed and outfeed tables in 5' and 10' lengths. Easy set-up outfeed tables come complete with a calibrated work stop guide that is available in inches or metric scale.

DM SERIES	SPECIFICATIONS		DM-6		DM-8		DM-10		DM-10P	
CAPACITY 90°	Rectangular		6.25' x 7.75'	159mm x 197mm	7.75' x 10.5'	197mm x 267mm	7.75' x 11'	197mm x 279mm	7.75' x 11'	197mm x 279mm
	Square		6.25'	159mm	7.75'	197mm	9'	229mm	9'	229mm
	Round		6.25'	159mm	8.25'	210mm	9.75'	248mm	9.75'	248mm
CAPACITY 45°	Rectangular	Left Right	2.25' x 5.5' 2.25' x 4.5'	57mm x 140mm 57mm x 114mm	7.5' x 7' 6' x 4.5'	191mm x 178mm 152mm x 114mm	8.25' x 7' 6.25' x 4.5'	210mm x 178mm 159mm x 114mm	8.25' x 7' 6.25' x 4.5'	210mm x 178mm 159mm x 114mm
	Square	Left Right	4.5' 3.75"	114mm 95mm	7' 5"	178mm 127mm	7' 5"	178mm 127mm	7' 5"	178mm 127mm
	Round	Left Right	5' 4.5"	127mm 114mm	7' 5"	178mm 127mm	7.25' 5.75"	184mm 146mm	7.25' 5.75"	184mm 146mm
CAPACITY 60°	Rectangular	Left Right	2.25' x 3' 1' x 2.5'	57mm x 76mm 25mm x 64mm	3.5' x 4.5' n/a	89mm x 114mm n/a	5' x 4.5' n/a	127mm x 114mm n/a	5' x 4.5' n/a	127mm x 114mm n/a
	Square	Left Right	2.25' 2.25'	57mm 57mm	3.5' n/a	89mm n/a	4.5' n/a	114mm n/a	4.5' n/a	114mm n/a
	Round	Left Right	3' 2.25'	76mm 57mm	3.75' n/a	95mm n/a	4.5' n/a	114mm n/a	4.5' n/a	114mm n/a
BLADE	Blade Dimensions		7'9" 3/4"	2363mm 19mm	9'0" 1"	2743mm 25mm	9'8" 1"	2946mm 25mm	9'8" 1"	2946mm 25mm
	Blade Drive		2-2.5 hp	1.5-1.8 kW	2-2.5 hp	1.5-1.8 kW	2-2.5 hp	1.5-1.8 kW	2-2.5 hp	1.5-1.8 kW
	Blade Wheel Diameter		10"	254mm	12"	305mm	12"	305mm	12"	305mm
	Blade Speed		140-280 SFM	43-85 m/min	140-280 SFM	43-85 m/min	140-280 SFM	43-85 m/min	140-280 SFM	43-85 m/min
OVERALL	Coolant Tank Capacity		3.5 US Gal	13 litres	3.5 US Gal	13 litres	3.5 US Gal	13 litres	3.5 US Gal	13 litres
	Table Height		34"	864 mm	34"	864 mm	34"	864 mm	34"	864 mm
	Machine Weight		688 lbs	312 kg	955 lbs	433 kg	1,100 lbs	499 kg	1,355 lbs	615 kg
	Machine Dimensions		Width Length Height	57" 38" 72"	1448mm 965mm 1829mm	70" 30" 72"	1778mm 762mm 1829mm	70" 30" 72"	1778mm 762mm 1829mm	70" 30" 72"

In line with HYD•MECH's policy of on-going product improvement, we reserve the right to modify features and specifications. Note that some options may not be available or are standard on the CE machines. Please check with your dealer for option availability.



HYD•MECH
The Rock Solid Solution.

HYD•MECH GROUP LIMITED
P.O. Box 1030, 1079 Parkinson Road, Woodstock, Ontario, Canada N4S 8A4
toll free: 1-877-276-SAWS(7297) phone: (519) 537-2103 fax: (519) 539-5126
www.hydmec.com email: info@hydmec.com

DEALER:

HYD•MECH
The Rock Solid Solution.

DM SERIES

STANDARD FEATURES:

- Miter capability from 60° left, and 45° left and right
- Easy sliding, cast iron vises
- Heavy-duty, cast iron head and wheels supported by a rigid pivot point reduces vibration while cutting
- Precise head rotation
- Carbide guides for longer blade life
- Work stop
- Blade control handle to start and stop blade in manual mode
- Coolant pump for band lubrication and cooling
- Conveniently located control panel within safe operator reach
- Safety limit switches
- Manual blade tension with tension meter and blade breakage switch

OPTIONAL:

- Pneumatic vise with foot pedal
- 24" calibrated work stop
- Conveyors, 5' and 10' lengths
- Single phase
- Mist lubrication system

The DM offers more standard features for the money!

The HYD•MECH DM Series are double-miter machines that provide exceptional cutting capability. These versatile saws save operator set-up time and the compact design makes them ideal for use in tight working spaces.

Cast iron head and vises are designed for rigidity and to absorb vibrations and ensure accuracy during cutting. From user-friendly operator controls, to easily accessible electrical panels and cabinets, each DM series machine is solidly built to give maximum productivity.



Our Rock Solid Pledge promises you the best cost-per-cut solution, the latest in design and engineering technologies, only high quality components and excellent customer service for your Hyd•Mech sawing system.



DM-8



DM-6



DM-10

Note: Photos may show optional equipment.

DM-10P

A semi-automatic saw with powered down-feed system and pneumatic vise. Precise head and table rotation combined with an easy slide left-to-right vise, allows for quick set-up of miter cuts of 0-60° left and 0-45° right.

The DM10P offers three modes of operation – manual pull down, semi-auto dynamic mode, and semi-auto foot pedal mode.

The pneumatic vise and foot pedal with emergency stop is a standard feature on this model.



DM-10P (Back View)



DM-10P



DM-10P Operator Panel
Ergonomic design with swing operator control panel allows for easy operation of saw from both sides.

Blade Tension Meter

Allows the operator to easily view the blade tension setting. It also serves as a broken blade switch that shuts down the machine when the tension is reduced.



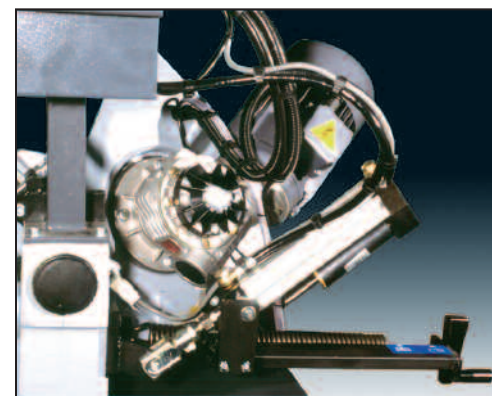
Control Panel

Conveniently located control panel within safe operator reach, with easily recognizable pictograms.



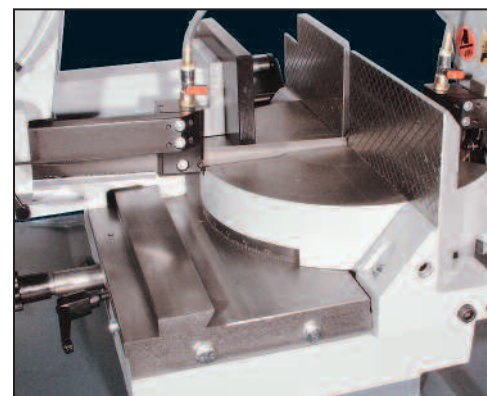
Drive System

The motor is directly mounted to the gear box eliminating belts and pulleys. The 2 speed motor provides for easy cutting of soft and hard materials.



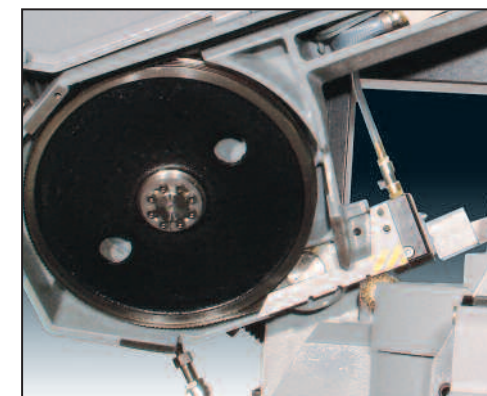
Guides

Carbide V-slotted guides with coolant flow help to extend blade life and reduce burrs. Heavy-duty cast iron and easy sliding vise allows for miter cutting left and right.



Blade Wheels

Heavy-duty cast iron wheels provide consistent blade performance and extended blade life.



Chip Brush

Chip brush for positive removal of metal chips for maximum blade life.

