

**ISO 9001: 2000 Certified**



**MARVEL MANUFACTURING COMPANY, INC.**  
3501 Marvel Drive  
Oshkosh, WI 54902  
**band saw** Website  
Phone (920) 236-7200

Official **marvel**

**MANUFACTURING COMPANY, INC.**  
Fax (920) 236-7209

Welcome to the official Marvel® Mfg. Co., Inc. Website. Home of the Marvel Metal Cutting Bandsaw and the official Marvel Band Saw Part source for the Industrial Vertical Band Saw and the Horizontal Band Saw.

Home

Up

## **MARVEL 2125 AND 2150 TOUCHTECH60**

**SHUTTLE.....**

### **Marvel 8 Mark III 60° Tilt Both Ways**

- 3° And Straight Column in one machine
- Patent pending Easy Load Guide Blocks
- Optional Power Tilt

**60° TILT**



**[Click Here for more details.](#)**

**Marvel TouchTech60  
Saws now with  
servo driven shuttle.  
Available in 4 , 8 ,  
13 & 18 Foot shuttle  
Lengths.**

**Click Below for  
Details.**

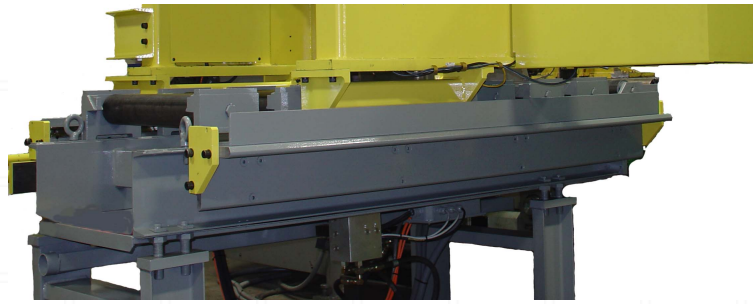


The TouchTech60 - Series 2125 and 2150 are the latest in the long line of quality Marvel bandsaw machines manufactured by Marvel Mfg. Co. The Marvel series 2125 and 2150 production vertical bandsaw are the first of a new family of machines built on a central design platform. The Series 2125 and 2150 are designed for high production and versatility. Standard features include a capacity of 20x25 inches, 60 degree mitering both left and right, a 3 degree forward canted blade, vector control electric blade drive and an automatic bar feed with 48 inch index length. The saw is the first to use the new touch screen Cutting Edge control. This new Windows based control allows the operators to select from preprogrammed function settings or customize functions to their personal preferences.



**Now equipped with our  
New High Performance  
Servo Shuttle. Available  
in 4' , 8' , 13' , and 18'  
Shuttle lengths.**

## New Metal Bandsaw

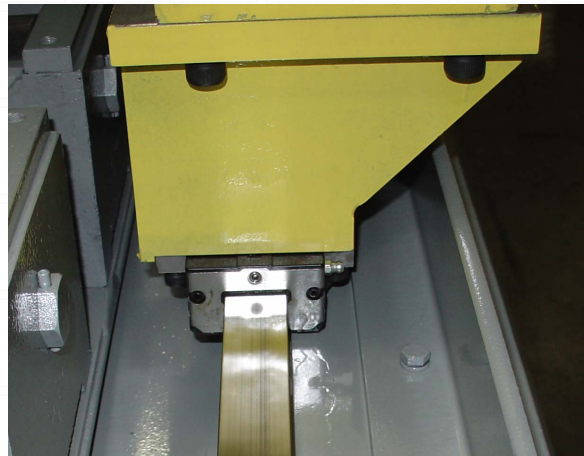


The technology gap between your saw and CNC machining center has been narrowed once again by Marvel's new series of Touchtech bandsaws. The same servo technology used in machining centers is now used to position material in the bandsaw an

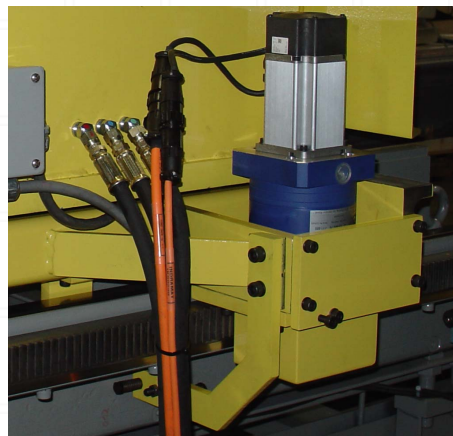
average of 41% faster than previous technology.

Testing shows an average of 18% improvement in part processing time as compared to older technology.

This improvement comes from a combination of faster positioning speeds (60 FPM) and improved positioning controls available from today's servo technology.



The guide system has been upgraded to use preloaded recirculating ball bearings. This provides a more accurate, quieter, more maintenance free system.



A combination of servo technology, an ultra low backlash gearbox, and precision rack and pinion gearing provides significant improvements in accuracy and speed. Marvel's Touchtech 60 bandsaw now uses the same technology to position material that is used on machining centers costing much more.

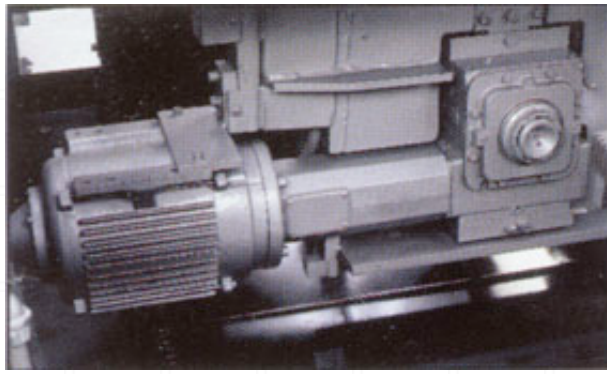
### Machine Specifications

2450 / 150"

ITEMS/MODEL	2125 (1.25" BLADE)	2150 (1.50" BLADE)
Capacity	20"x25" (508mm x 635mm)	20"x25" (508mm x 635mm)
Capacity @ 45 Deg.	20"x17" (508mm x 432mm)	20"x17" (508mm x 432mm)
Capacity @ 60 Deg.	20"x11 1/4" (508mm x 285mm)	20"x11 1/4" (508mm x 285mm)
Blade Dimensions	1.25 x .042 x 17'-6" (31.75 x 1 x 5334mm)	1.50 x .050 x 18'- 2" (38 x 1.27 x 5586mm)
Band Wheel Diameter	23"	23"
Blade Drive Motor	7.5 HP (5.6kw)	10 HP
Coolant Motor	1/8 HP	1/8 HP
Blade Speed	30-650 FPM (9-200 m/min)	30-650 FPM (9-200 m/min)
Blade Drive	Sensorless Vector Control	Sensorless Vector Control
Blade Tension	Hydraulic Adjustable - 45,000 PSI Max (310 MPa)	Hydraulic Adjustable - 45,000 PSI Max (310 MPa)
Vises	Hydraulic Full Stroking	Hydraulic Full Stroking
Index Length	48" (1220mm)	48" (1220mm)
Column Travel	Recirculating Linear Ball Ways	Recirculating Linear Ball Ways
Coolant Capacity	60 Gal. (227 L)	60 Gal. (227 L)

### Machine Options

- 8', 13' and 18' Shuttle lengths.
- Auto power roller tables.
- Automatic positioning guide arm
- 10HP Blade Drive Option on 2125 Machines.
- Full line of material handling equipment.

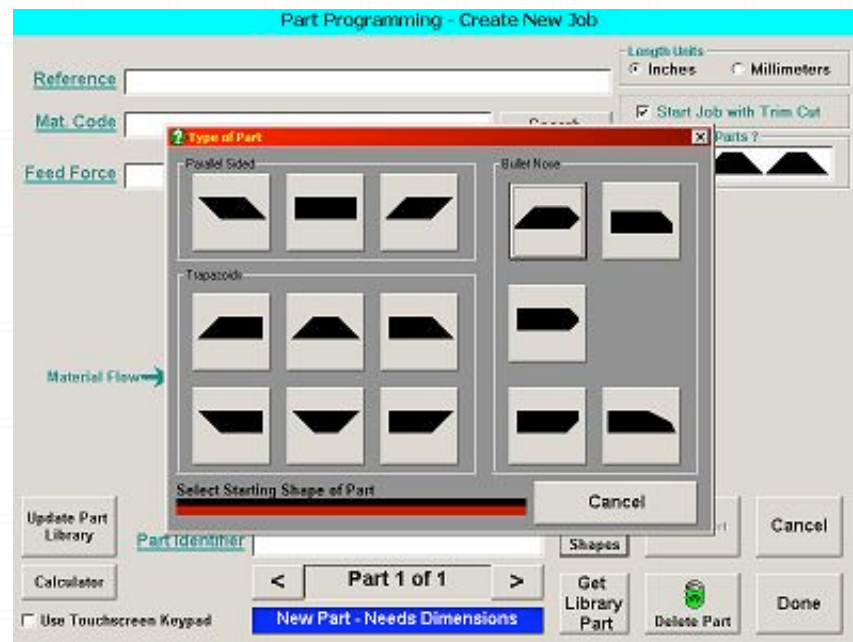


Sensorless Vector Blade drive control.  
Blade Speeds from 30-650 FPM.

## 60° Cutting Capability



Advanced graphical touch screen control and part programming.



[\[Home\]](#) [\[Up\]](#)

Site Search

Search

powered by Google



WWW



Sawing.com

Questions or comments please see our [contact page](#).

**No part or parts of this site may reproduced on any other sites without written permission of Marvel® Manufacturing, Inc.**

**Copyright © 2006 Marvel Manufacturing Inc. All rights reserved.**

**Note: Options, specifications, prices and webpage content subject to change without notice.**

**Warning: Machine guarding removed for illustration proposes only. Always read the operation manual for proper machine operation.**

This site is best viewed with Internet Explorer 6.x and a screen resolution of 1024x768